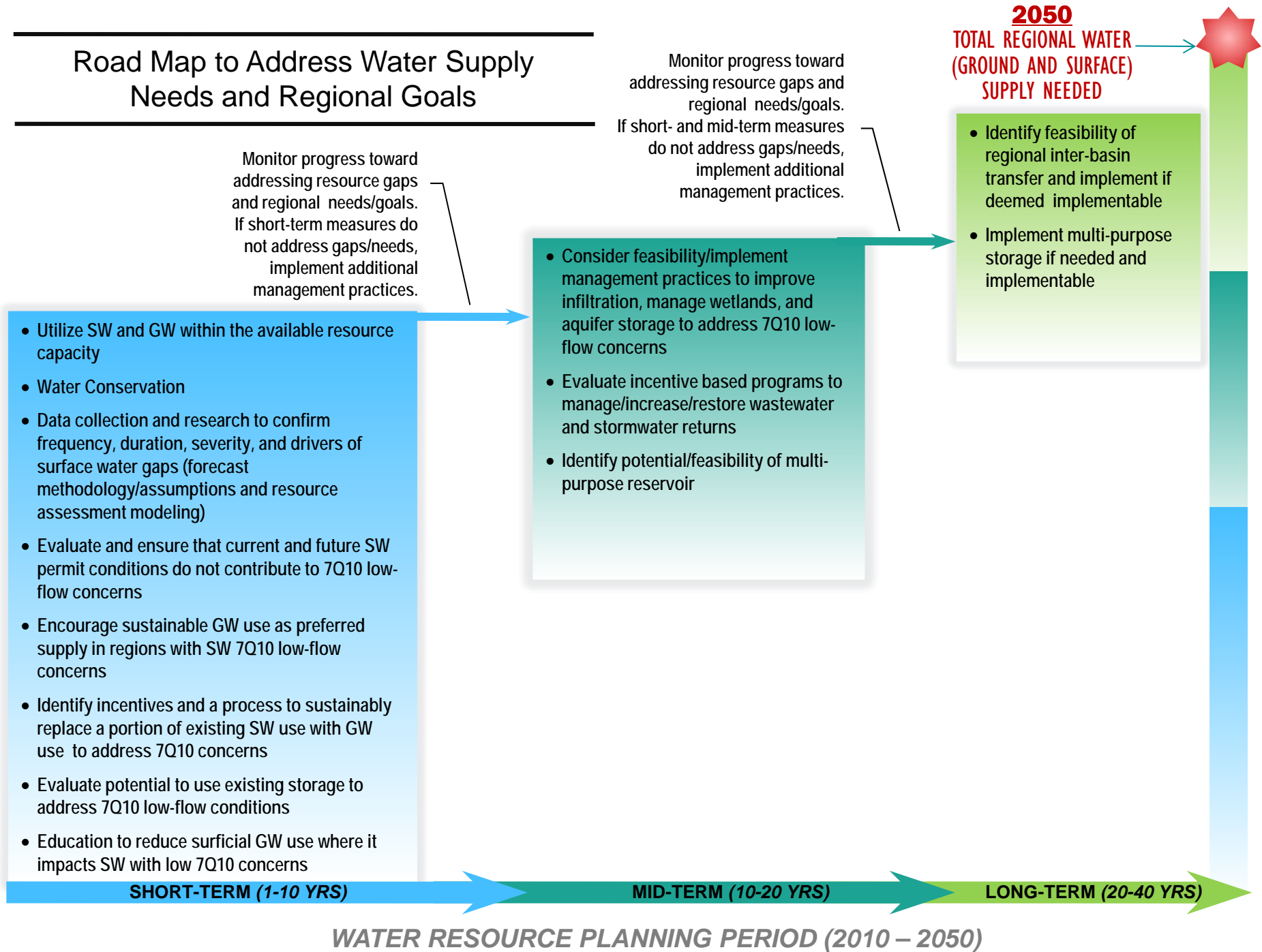


Road Map to Address Water Supply Needs and Regional Goals



Road Map to Address Water Quality Needs and Regional Goals

Monitor progress toward addressing resource gaps and regional needs/goals. If short-term measures do not address gaps/needs, implement additional management practices.

Monitor progress toward addressing resource gaps and regional needs/goals. If short- and mid-term measures do not address gaps/needs, implement additional management practices.

2050
TOTAL REGIONAL WATER
QUALITY NEED

- Point Sources - support and fund current permitting and waste load allocation process to improve treatment of wastewater and increase treatment capacity
- Point Sources - data collection and research to confirm discharge volumes and waste concentrations, and receiving stream flows and chemistry
- Non-point Sources - data collection to confirm source of pollutants and causes; encourage stormwater ordinances, septic system maintenance, and coordinated planning
- Non-point Sources - ensure funding and support for BMP programs by local and state programs including:
 - Urban BMPs
 - Rural BMP
 - Forestry BMPs
 - Agricultural BMPs
- Non-point Source Existing Impairments – TMDL listed streams
 - Improve data on source of pollutant and length of impairment
 - Identify opportunities to leverage funds and implement non-point source BMPs

- Point Sources - continue wastewater master planning updates and waste load allocation
- Pursue additional non-point source controls and need for stormwater ordinances

- Point Sources - continue wastewater master planning updates and waste load allocation
- Pursue additional non-point source controls and need for stormwater ordinances

SHORT-TERM (1-10 YRS)

MID-TERM (10-20 YRS)

LONG-TERM (20-40 YRS)

WATER RESOURCE PLANNING PERIOD (2010 – 2050)

